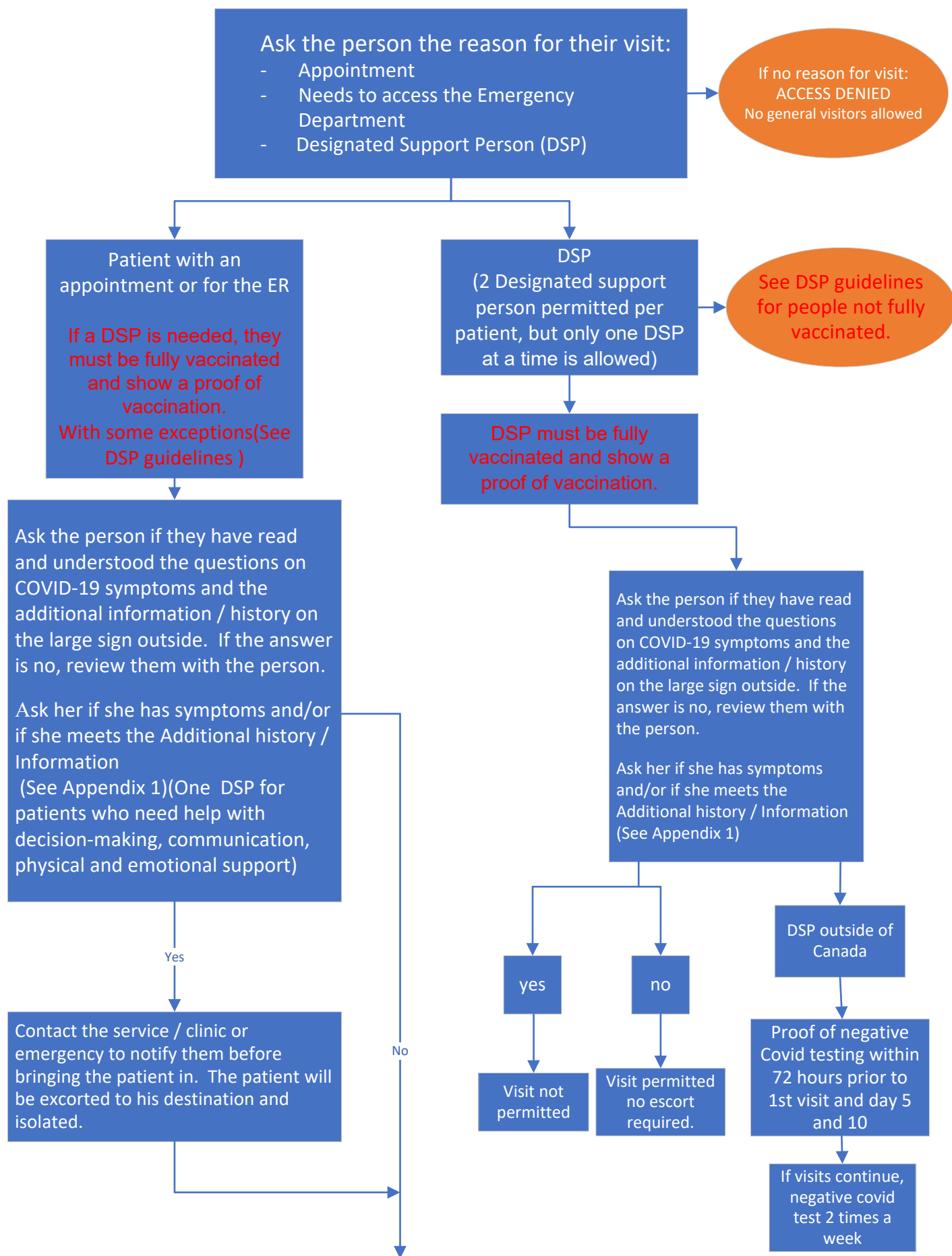


Covid-19: Guide – Door Control – Main Entrance or Emergency Entrance



- Advise or assist the patient / visitor to clean their hands with the alcohol hand rinse
- Ask the patient / visitor to remove their mask and place medical mask/KN95
- DSP must wear a medical mask or N95
- Advise or assist the patient / visitor to clean their hands with the alcohol hand rinse after donning a mask
- Direct the patient to the service / clinic or triage (for emergency) or direct the visitor to the unit
- Remind the patient / visitor to touch as little as possible and limit movement within the hospital
- Remind the patient / visitor to respect the social distancing instructions (2 meters)

Exclusions for wearing the mask (patients) :
-Children under 2 years old

APPENDIX 1

COVID – 19 Symptoms

- Fever / chills
- Cough (new cough or worsening of chronic cough)
- Headache
- Sore throat
- Runny nose / nasal congestions
- Diarrhea
- New fatigue
- New muscle pain
- Loss of sense of taste or smell
- Purple markings on the fingers or toes (in children)
- Shortness of breath / difficulty breathing
- Loss of appetite

Additional history / information

- Has been in contact with a confirm COVID-19 case within the past 10 days
- Have you been diagnosed with Covid-19 within the past 10 days?
- Are you from or have visited outside of Canada within the last 14 days, this includes for work purposes?
- Have you been told that you have been exposed to Covid-19 within the past 10 days
- For visitors only, are you fully vaccinated (2 doses) with an approved vaccine and 14 days post 2nd dose

Website for self regulation: https://www2.gnb.ca/content/gnb/en/departments/ocmoh/cdc/content/respiratory_diseases/coronavirus/coronavirusexposure.html#/app/symptom-checker/guides/399/what-to-do

Guidelines for Designated support person (DSP)

- DSPs must be fully vaccinated and show proof of vaccination.
- Eligible patients below can identify up to two DSPs with one person present at a time (exceptions to the number of DSPs are identified below).
- If not fully vaccinated DSP is available, an unvaccinated or not fully vaccinated DSP will be allowed to visit, if they meet the testing requirements for COVID-19, please refer to the DPS guidelines and demonstrate proof of negative screening test result.
- DSP must go through screening at the door and is not allowed to visit if symptomatic. They should limit circulation in the hospital/ unit as much as possible and stay in the patient's room.

Guidelines for suspected or confirmed COVID + patients at end of life

- Compassionate visits for suspected or COVID-19 positive patients and for whom death is imminent are permitted. Please contact unit.

****If visitors require testing, please refer to gnb.ca site for appointment**